



# 24 Most Frequently bought items

Sausage, hotdogs, chili, turkey wings and more!



# Most Popular Items

BUY LOCAL, SPEND LOCAL, SUPPORT LOCAL

A FEW OF OUR MVP'S!



**1.**

## TL Herring Country Sausage

10 lb. box of link or bulk co. style sausage. Hot or mild options.



**2.**

## TL Herring Chili

2/5 containers of TLH original hotdog chili. 10 lb box.



**3.**

## Carolina Packer Franks

10 lb. box of red hot dogs. 100 count.



**4.**

## Carolina Packer Smo. Sausage

10 lb. box of all meat smoked sausage.



**5.**

## Carolina Packer Red Hots

10 lb. box of red hots



**6.**

## Pork Spareribs

About 36 lbs. of pork spareribs. 3 slabs per pkg, 3 pkgs. per case



**7.**

## Sliced Slab Bacon

10 lbs of rind on sliced slab thick bacon



**8.**

## Tomahawk Pork Chops

10 pkgs of tomahawk pork chop. Avg 10 lbs.



# Most Popular Items

BUY LOCAL, SPEND LOCAL, SUPPORT LOCAL

A FEW OF OUR MVP'S!



**9.**

## Sea Trout

10 lb. slab of frozen sea trout. Approximately 30-35 pieces per slab



**10.**

## Whiting

10 lb. slab of frozen whiting.



**11.**

## Catfish Nuggets (Raw)

15 lb. box of raw catfish nuggets



**12.**

## Country Cured Pork Hocks

10 lb. box of country cured pork hocks. 2/5 lb bags



**13.**

## Beef Fine Grind

10 lb. tube of beef fine grind. Hamburger meat.



**14.**

## All Beef Patty

40/4 oz all beef patties. 10 lb. box.



**15.**

## Hoop Cheese

22 lb. wheel of red or black wax hoop cheese



**16.**

## 15 Dozen Eggs

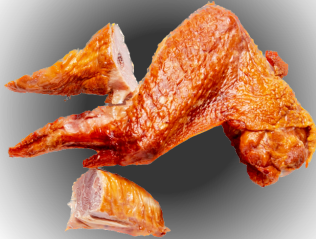
15 dozen extra large eggs. Options include loose or in carton.



# Most Popular Items

BUY LOCAL, SPEND LOCAL, SUPPORT LOCAL

A FEW OF OUR MVP'S!



**17.**

## Smoked Turkey Wings

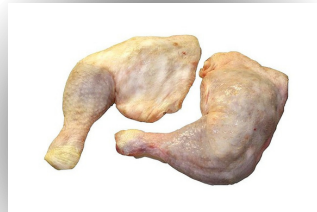
30 lbs of Smoked Tom turkey wings



**18.**

## Smoked Turkey Drumstick

30 lbs of smoked Tom turkey drumsticks. State Fair sized



**19.**

## Chicken Leg 1/4's

140 lbs. of raw chicken leg 1/4's. About 40 per case



**20.**

## Jumbo Whole Chicken Wings

40 lb. box of Jumbo Whole Chicken Wings



**21.**

## 2 jt TOM Turkey Wings

30 lb. case of 2 joint, Tom turkey wings



**22.**

## 2 jt HEN Turkey Wings

30 lb. case of 2 joint, Hen turkey wings



**23.**

## Pork Neckbones Cut

30-40 lbs of cut pork neckbones.



**24.**

## Pork Feet Split

130 lb. case of pork feet split